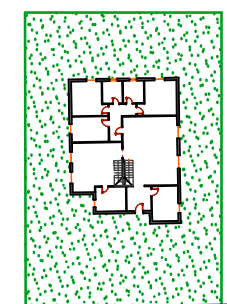
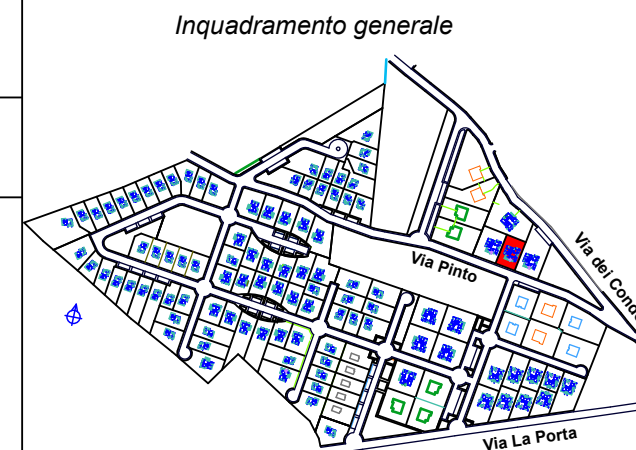
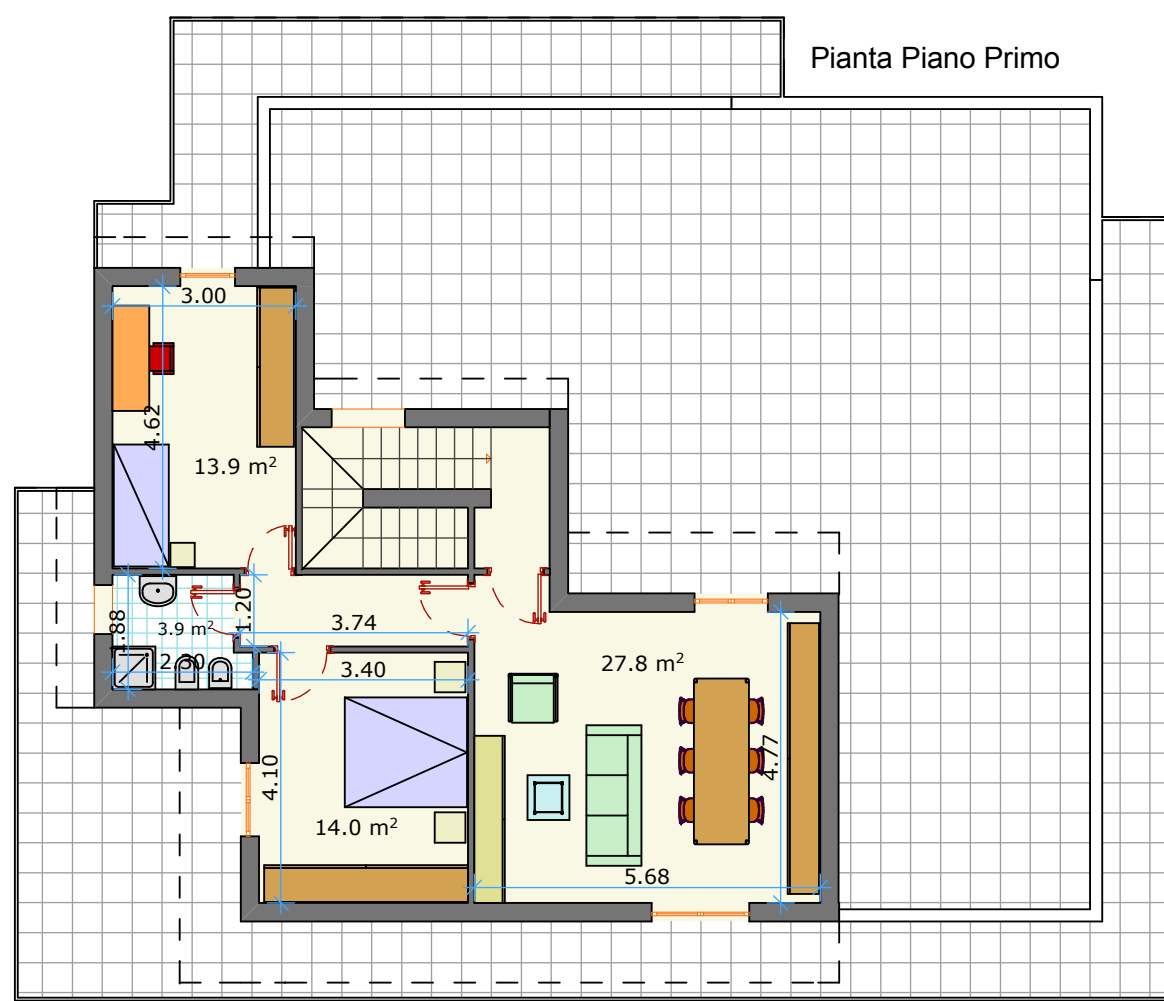
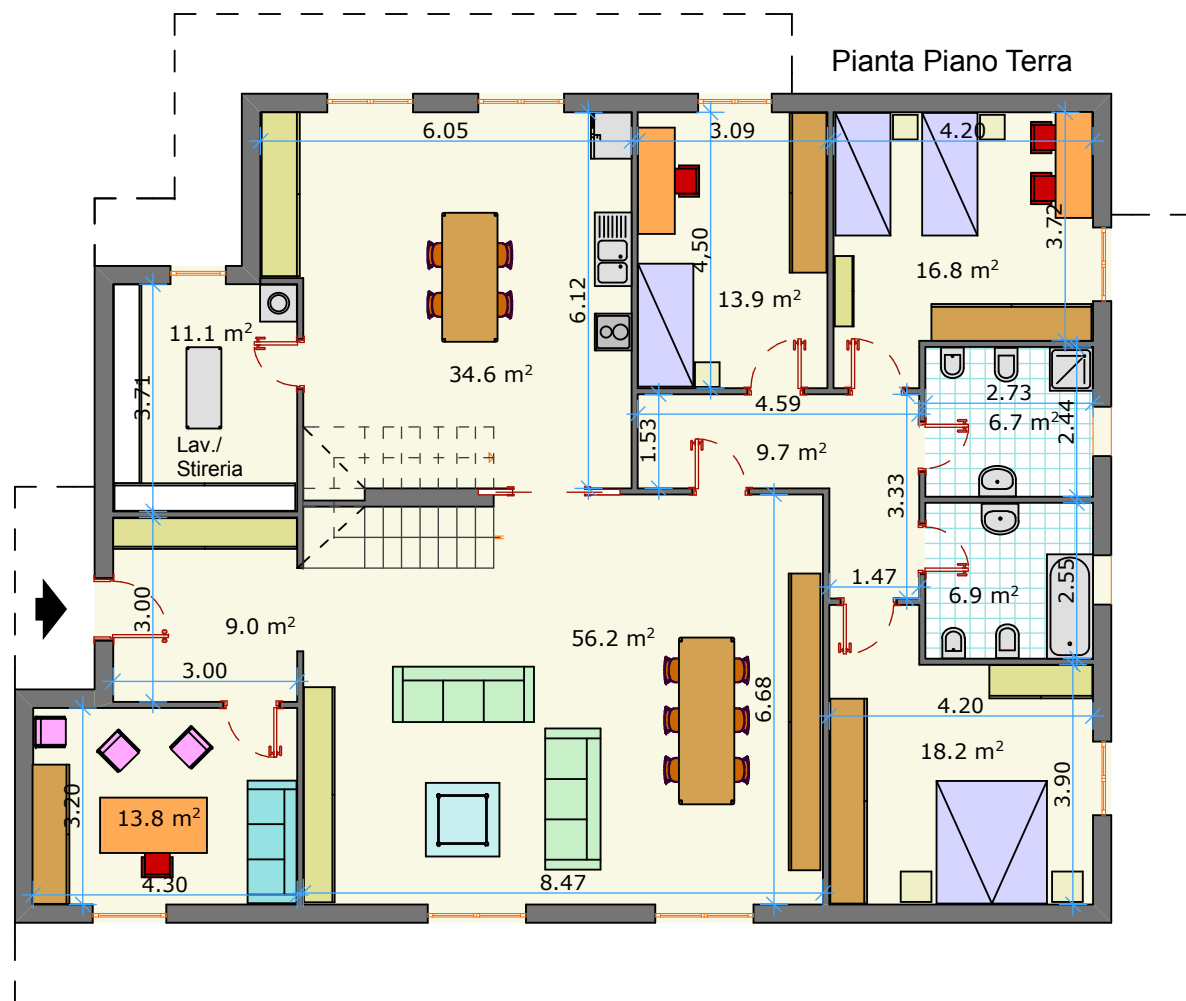


Residenza ELICONIA - Comparto 60 di Lecce

Villa F2 - lotto 9



SUPERFICIE REALE		SUPERFICIE CONVENZIONALE	
Alloggio al lordo delle murature	mq 311 ca.	Alloggio al lordo delle murature (100%)	mq 311 ca.
Balconi / Verande coperte	mq 62 ca.	Balconi / Verande coperte (50%)	mq 31 ca.
Verande a piano / Area solare	mq 194 ca.	Verande a piano (33%)	mq 64,02 ca.
Giardino di pertinenza esclusiva e posto auto scoperto	mq 633 ca.	Giardino di pertinenza esclusiva e posto auto scoperto (25%)	mq 158,25 ca.
		TOT. SUPERFICIE CONV.LE	mq 564,37 ca.

COSTO TOTALE € 500.000



Coordinamento tecnico - amministrativo - finanziario



Via D. De Angelis, 8 - LECCE tel/fax: 0832-248832
info@gruppoeureco.it